



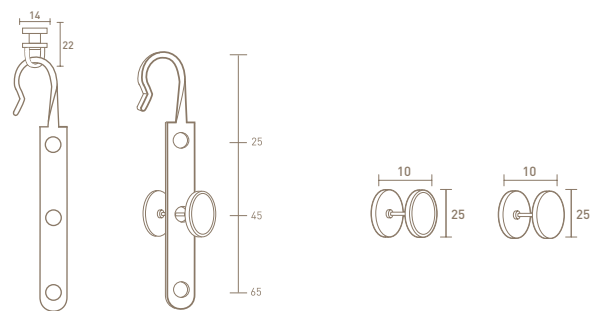
Pleating Hooks for Tracked Poles

The pleating hook, an adaption of our popular pleating ring, has been designed to create a unique and contemporary curtain heading for use with our tracked or corded poles.

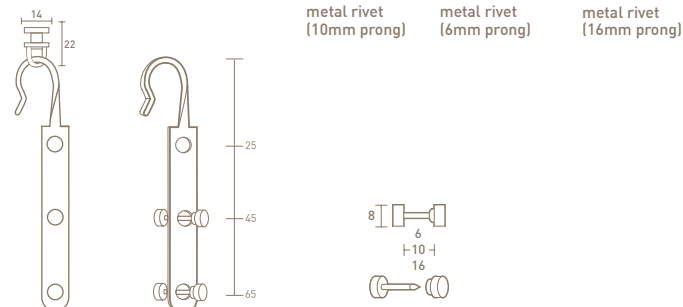
Match the finish of your pole to the insert of your rivet, or make a statement and pick contrasting colours. Our new colour options are displayed on the fold out sheet, while the existing range of colours and textures can be found on pages 70-72 of the main catalogue.

The pleating hook comes with three rivet attachment holes, allowing you even more flexibility when placing your rivets. The simple design hooks through the eye of the glider which swivels 360 degrees and allows you to create single or double pleats, flat panels and box or inverted pleats in the same way as the pleating ring opposite. Choose either one large rivet (plain or with a coloured insert) or two small rivets.

50mm pleating hook - plain rivet	R-UNIMD-TR-SS
50mm pleating hook - recessed rivet	R-UNIMDR-TR-SS



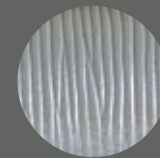
50mm pleating hook - double rivet	R-UNIM-TR-SS	R-UNIM6-TR-SS	R-UNIM16-TR-SS
	metal rivet (10mm prong)	metal rivet (6mm prong)	metal rivet (16mm prong)



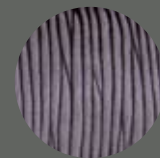
Strata



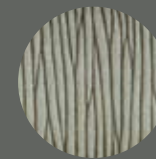
opalite (SOP)



marcasite (SMA)



baltic (SBA)



shale (SSH)



agate (SAG)

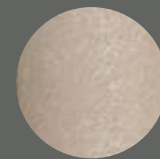


flint (SFL)

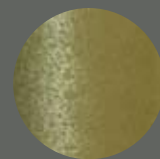
Lucent



white frost (LWF)



morning sun (LMS)



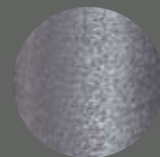
grass dew (LGD)



sky (LSK)

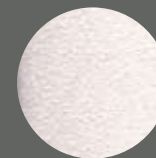


arctic (LAR)

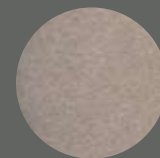


shadow (LSH)

Suede



chalk (SCH)



fawn (SFA)



vole (SVO)



new acorn (SNA)

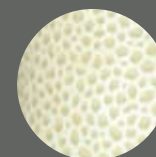


eucalyptus (SEU)

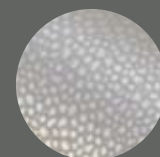


slate (SSL)

Mineral



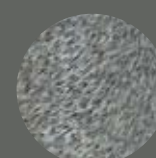
sieneese (MSI)



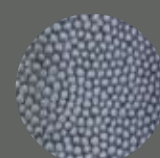
pebble (MPE)



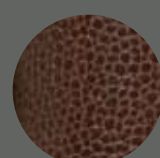
tennessee (MTE)



purbeck (MPU)



onyx (MON)



marron (MMA)

For more rivet insert options please refer to the main catalogue pages 70-72